


Vector Pro Hardware Installation Instructions

Table of Contents

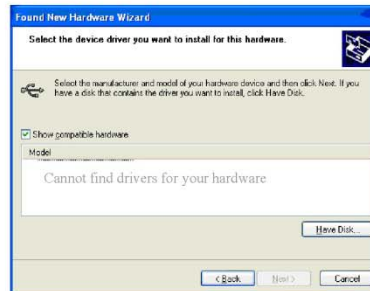
Hardware Installation – Windows XP.....	2
Hardware Installation – Windows Vista / Windows 7.....	5

Hardware Installation (Windows XP)

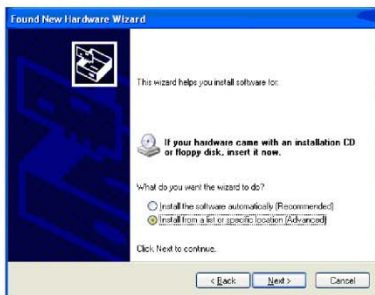
1. Install the two Vector Pro protective shields. The product warranty will not cover damages to the unit during use without the shields.
2. Use the AC adaptor to connect the Vector Pro to a power source.
3. Use the USB cable to connect the Vector Pro to your computer. Note: The USB symbol  on your computer will indicate where to insert the cable.
4. Fold the rear foot down on the back of the Vector Pro and set the unit on the ground.
5. Power on the Vector Pro. Two high pitched beeps will sound.



6. The Welcome to the Found New Hardware Wizard screen will appear. In response to the question, "Can Windows connect to Windows Update to search for software?" select **No, not this time**. Then click **Next**.



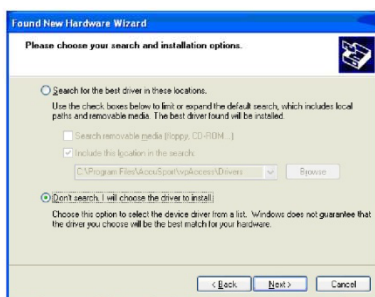
9. When asked to select the device driver you want to install for this hardware, click **Have Disk**.



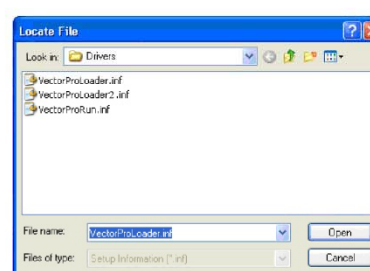
7. Vector Pro does not require a CD or floppy disk for set up, so select **Install from a specific location (Advanced)**. Click **Next**.



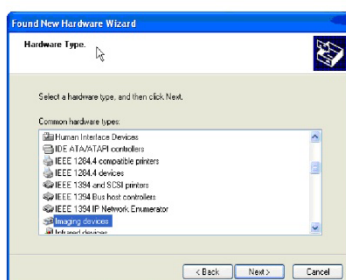
10. In the next screen, click **Browse**. Vector Pro does not require a CD or floppy disk for set up.



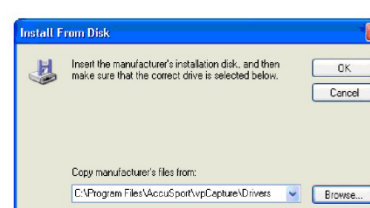
8. When directed to "Please choose your search and installation options," click **"Don't search. I will choose the driver to install."** Click **Next**.



11. Use the Look in: dropdown to browse to **C:\Program Files\AccuSport\vpSeries\vs_vpProcess\Drivers** and click **Open**, or simply type **C:\ProgramFiles\AccuSport\vpSeries\vs_vpProcess\Drivers** in File name and click **Open**.



8a. If a window opens asking you to select hardware type, select **Imaging devices** and click **Next**. If this window does not open, proceed to step 9.



12. In the Install from Disk window, click **OK**.



13. In the Found New Hardware Wizard window, click **Next**.



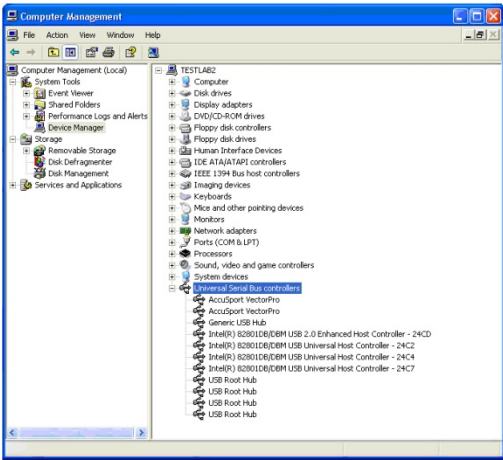
14. When this Hardware Installation window appears, click **Continue Anyway**.



15. In the Completing the Found New Hardware Wizard window, click **Finish**.

The Found New Hardware Wizard window will appear for up to three more times. Repeat steps 6 - 15.

When the Vector Pro hardware installation is complete, Windows will give you the message, "Your new hardware is installed and ready to use."



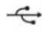
16. Follow these steps to confirm that the hardware is properly installed:

1. Click **Start** at the lower left corner of your computer screen.
2. Right click **My Computer** and select **Manage**.
3. Click **Device Manager**.
4. Double click **Universal Serial Bus Controllers**.
5. Check to see that AccuSport Vector Pro is listed *twice*.
6. We recommend restarting the computer after the driver installation is complete.

After installing the software, you can access the User Guide at any time by clicking Help in the toolbar of the Software.

NOTE: Always use the same USB port on the computer that the drivers were initially installed on. Otherwise, you may have to reinstall the hardware drivers.

Hardware Installation (Windows Vista and Windows 7)

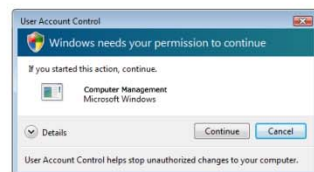
1. Install the two Vector Pro protective shields. The product warranty will not cover damages to the unit during use without the shields.
2. Use the AC adaptor to connect the Vector Pro to a power source.
3. Use the USB cable to connect the Vector Pro to your computer. Note: The USB symbol  on your computer will indicate where to insert the cable.
4. Fold the rear foot down on the back of the Vector Pro and set the unit on the ground.
5. Power on the Vector Pro. Two high pitched beeps will sound.



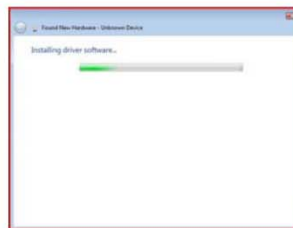
6. The Found New Hardware Wizard will appear. Select "Locate and install driver software" to continue.



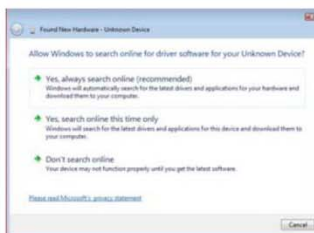
11. When the "Windows can't verify the publisher of this driver software" window appears, click **Install this driver software anyway**.



7. If the User Account Control window appears, click Continue.

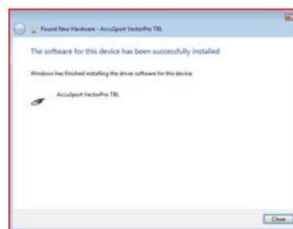


12. The Installing driver software window will appear.



8. The "Found New Hardware - Unknown Device" window will appear. Select "Don't search online".

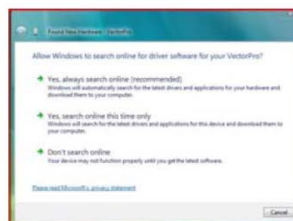
***This message may not appear on some computers*



13. After the device driver has finished installing you will see a message "The software for this device has been successfully installed". The device listed will be either "AccuSport VectorPro TBL" or "AccuSport VectorPro TBL2". Hit Close button to continue.

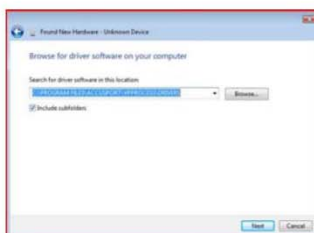


9. Select "Browse my computer for driver software (advanced)" to continue.



14. The Found New Hardware - VectorPro will appear. Select "Don't search online".

***This message may not appear on some computers*



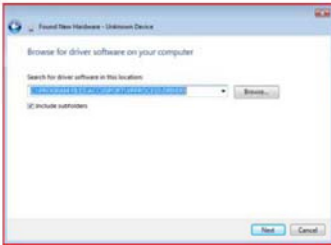
10. Type C:\Program Files\AccuSport\vpProcess\Drivers in File name and click **Next** or click **Browse** and navigate to the C:\Program Files\AccuSport\vpProcess\Drivers folder and click **OK**.



15. The message "Insert the disc that came with your VectorPro" will appear. Select "I don't have the disc. Show me other options" to continue.



16. Click "Browse by computer for driver software (advanced)" to continue.



17. Type C:\Program Files\AccuSport\vpProcess\Drivers in File name and click **Next** or click **Browse** and navigate to the C:\Program Files\AccuSport\vpProcess\Drivers folder and click **OK**.



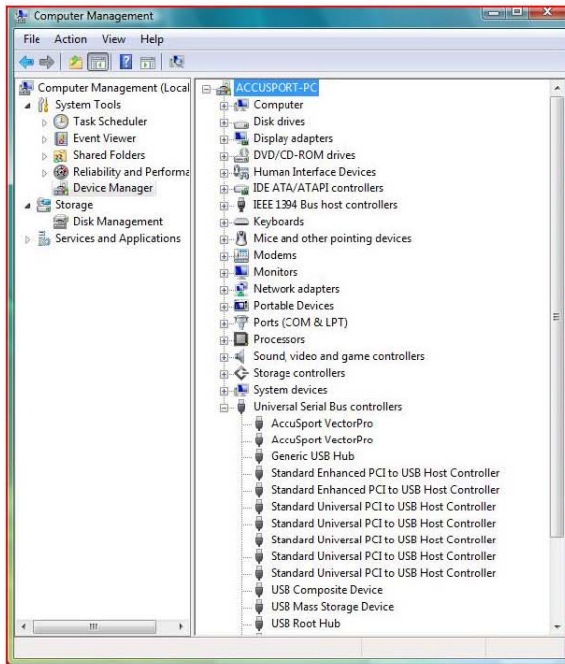
18. When the 'Windows can't verify the publisher of this driver software' window appears, click **Install this driver software anyway**.



19. The Installing driver software window... will appear.



20. After the device driver has finished installing you will see a message "The software for this device has been successfully installed". Hit Close button to finish.



22. Follow these steps to confirm that the hardware is properly installed:

1. Click **Start** at the lower left corner of your computer screen.
2. Right click **Computer** and select **Manage**.
3. Click **Device Manager**.
4. Double click **Universal Serial Bus Controllers**.
5. Check to see that AccuSport Vector Pro is listed *twice*.
6. We recommend restarting the computer after the driver installation is complete

After installing the software, you can access the User Guide at any time by clicking Help in the toolbar of the Software.

NOTE: Always use the same USB port on the computer that the drivers were initially installed on. Otherwise, you may have to reinstall the hardware drivers.