

VSeries v2.0 Software Installation Instructions

Table of Contents

Prior to Software Installation – Windows XP.....	2
Prior to Software Installation – Windows Vista and Windows 7.....	3
Software Download and Extraction Instructions.....	6
Software Installation.....	7

Prior to Software Installation – Windows XP

The following steps should be taken to prevent the Windows XP Operating System from shutting down the computer's USB ports, and to prevent the Computer from slowing down its processor speed, while the VSeries software is in use.

Power Options Settings

- 1) Select the Windows XP **Start** Button
- 2) Select the **Control Panel**
- 3) Select **Power Options**
- 4) Under **Power Schemes**, use the drop down to select **Always On**.
- 5) Click **Apply**, then **OK** at the bottom right side of this window.

USB Power Saving Settings

- 1) Select the Windows XP **Start** Button
- 2) Right-Click on **My Computer**
- 3) Select **Manage**
- 4) When the 'Computer Management' window opens, select **Device Manager**
- 5) Scroll down the hardware list on the right until 'Universal Serial Bus Controllers' is visible
- 6) Select the Plus (+) sign next to 'Universal Serial Bus Controllers' and the USB devices will be revealed.
- 7) Right-click on the first 'Root Hub' listed and select **Properties**
- 8) From the 'USB Root Hub Properties' window, select the **Power Management** tab
- 9) **Uncheck** the box labeled "Allow the computer to turn off this device to save power"
- 10) Click **OK** at the bottom of this window.
- 11) Repeat steps 8 through 11 for all the remaining 'Root Hubs' listed under the 'Universal Serial Bus Controller' heading

Prior to Software Installation – Windows Vista and Windows 7

The following steps should be taken to ensure the Power Options on a Windows Vista or Windows 7 based computer are set correctly in order to work with the VSeries Software.

Power Options Settings

- 1) Select the Windows **Start** Button
- 2) Select the **Control Panel**
- 3) Select **Power Options** (You may have to Select the “Classic View” link in the top right corner of the window in order to view the ‘Power Options’ icon)
- 4) Select **High Performance** (*you may need to click ‘Show Additional Plans’ for Windows 7*)
- 5) Next, select **Change Plan Settings**

Note: For the following procedure the “On Battery” setting is only available on laptop computers. For Desktop computers the “On battery” and ‘Plugged In” labels are not present but the layout is similar. This procedure can still be used to ensure Desktop Computers with power saving features are set-up correctly for the Vector Pro.

- 6) Select the **Put the Computer to Sleep** option
 - o Set “On Battery” to **Never** by clicking on the down pointing arrow next to the “minute” numerals and selecting ‘Never’.
 - o Set “Plugged In” to **Never** by clicking on the down pointing arrow next to the “minute” numerals and selecting ‘Never’.
- 7) Select the **Change Advanced Plan Settings** link. (A new window will be displayed)
 - o Select the plus (+) sign next to the Hard Disks label and set all displayed “Minutes” to read **Never** by holding down the left mouse button on the down pointing arrow next to the minute numerals until the “Minutes” display reads ‘Never’.
 - o Select the plus (+) sign next to the “Turn off Hard Disks After” label Set all displayed “Minutes” to read **Never** by holding down the left mouse button on the down pointing arrow next to the minute numerals until the “Minutes” display reads ‘Never’.

- o Select the plus (+) sign next to the **Sleep** label
 - Select the plus (+) signs next to "Sleep After," and set all displayed "Minute" fields to read **Never** or **Off** by holding down the left mouse button on the down pointing arrow next to the minute numerals until the "Minutes" display reads "Never" or "Off"
 - Select the plus (+) sign next to "Allow Hybrid Sleep," and set all displayed "Minute" fields to read **Never** or **Off** by holding down the left mouse button on the down pointing arrow next to the minute numerals until the "Minutes" display reads "Never" or "Off"
 - Select the plus (+) sign next to "Hibernate After", and set all displayed "Minute" fields to read **Never** or **Off** by holding down the left mouse button on the down pointing arrow next to the minute numerals until the "Minutes" display reads "Never" or "Off"
- 8) Select the plus (+) sign next to the **USB settings** label.
- o Then, select the plus (+) sign next to the "USB selective suspend setting" label.
 - o Ensure both fields read **Disabled**. If they do not, select the down pointing arrow for each field , in turn, and select "Disabled"
- 9) Select the plus (+) sign next to the **Processor Management** label
- o Then, select the plus (+) sign next to the "Minimum Processor State" label
 - o Change settings for the "On Battery" and "Plugged In" labels to 100 percent (%) by holding down the left mouse button on the up pointing arrow next to the percentage (%) display till it reads 100 percent (%)
 - o Then select the plus (+) sign next to the "Maximum Processor State"
 - o Change settings for the "On Battery" and "Plugged In" labels to 100 percent (%) by holding down the left mouse button on the up pointing arrow next to the percentage (%) display till it reads 100 percent (%)
- 10) In the bottom right corner of the page select **Apply** and then **OK**.

- 11) The previous Power Options Settings page is now displayed, select the **Save Changes** key.
- 12) Exit the final Power Options window by clicking the Red –“X” button to complete your set-up.
- 13) Turn Vector Pro **Off**
- 14) **Restart** the Computer

Disabling User Account Control (Windows Vista and 7)

We recommend disabling the User Account Control to prevent the Windows Vista or 7 Operating System from blocking the VSeries installation or causing an error message on opening the application.

****Changing UAC settings after installation may cause software to become unstable. Do NOT change UAC settings after installation.***

- 1) Left Click on **Start**
- 2) Left Click on **Control Panel**
- 3) Left Click on **User Accounts** (If you cannot see a "User Accounts" Icon click on the "Classic View" link in the left hand column of the window, then repeat the first part of step 3)
- 4) Left Click on **Turn User Account Control On or Off** (Vista);
Change User Account Control Settings (Windows 7)
- 5) Uncheck the **User Account Protection** checkbox (Vista);
Position slider at bottom to **Never Notify** (Windows 7)
- 6) Click on **OK**
- 7) Left Click on **Yes** to Restart the computer

Please call AccuSport Customer Support (336) 759 3300 x2, or e-mail support@accusport.com, if any problems are encountered while following this procedure. Note: Some versions of Vista and 7 do not allow for users to disable the User Account Control.

Software Download and Extraction Instructions

**You will need these instructions only if you are downloading the VSeries software from our website. If you already have a VSeries software CD, proceed to page 7.*

- 1) You must contact AccuSport customer support to obtain a username/password before downloading the software.
(866) 759-3302 or at support@accusport.com.
- 2) When you download the software from the website, select the 'Save' option and save the software to your computer's desktop.
- 3) After the software has been saved, right-click on the zip folder and select 'Open With – Compressed/Zip Folders'
- 4) On the left side, or from the 'File' menu, select 'Extract All'
- 5) A 'New Folder' will appear on your desktop with the extracted files inside, open this folder
- 6) Double-click on the 'setup.exe' file to begin the software installation and proceed to step 1 of the software installation instructions.

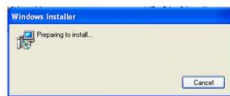
Software Installation

*The following steps are for Windows XP. Though cosmetically different, the Windows Vista and Windows 7 installations follow the same procedure.

For Vector Pro first time setup, you must install and configure the software on your computer. Complete the software installation before connecting the Vector Pro to your computer.

Before installing the VSeries software, verify that you have at least 1GB of computer memory if using Windows XP or at least 1.5 GB of computer memory if using Windows Vista or 7.

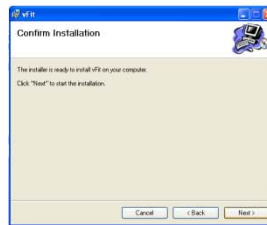
If the software installation does not auto-run, go to Start>My Computer and open your CD Drive



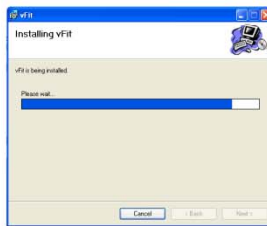
1. The Windows Installer “Preparing to Install” window will appear.



2. If the Vector Pro setup .net Framework v3.5 window appears, click **Accept**.



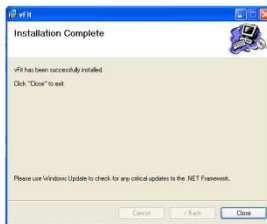
5. The “Confirm Installation” window will appear, click **Next** to install the software.



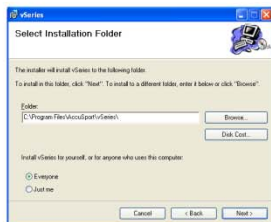
6. The “Installing software” window will appear.



3. When the “Welcome to the software Setup Wizard” window appears, click **Next**.



7. When the “Installation Complete” window appears, click **Close**.



4. Select the folder where the software will be installed. It is recommended that you use the default location, and click **Next**.

*After installing the software, you can access the User Guide at any time by clicking Help in the toolbar of the Software.